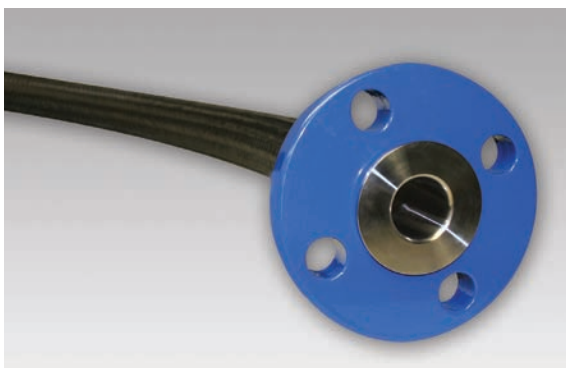


Chlorine Applications – Chlorine Transfer Hose Specifications



Flexible Components brand chlorine transfer hose is ideal for tough, demanding applications such as chlorine, bromine, sodium hydroxide, sodium hypochlorite, sulfuric and hydrochloric acids, and other corrosive materials. Manufactured in accordance with Chlorine Institute Pamphlet 6 piping specifications, chlorine transfer hose has unexcelled chemical resistance for longer service life.

Features & Benefits

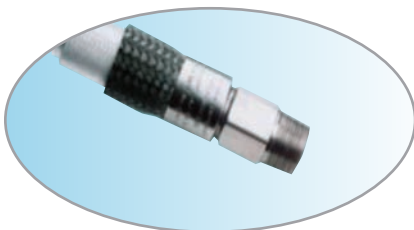
- Unexcelled chemical resistance for longer service life.
- Not subject to stress corrosion, pinholing or flex cracking.
- Convoluted inner core is low profile and helical formed to promote self-drainage.
- Moisture will not affect inner core.
- Does not need to be cleaned and capped after every use.
- Minimum pressure drop for faster loading and unloading.
- Lightweight and ultra flexible for handling ease.
- Low force to bend.
- Can be inspected safely.
- Less costly than Monel® (metal) hose.
- Wide hex flats for easy wrenching.
- One-piece extruded Chemfluor® PTFE fluoropolymer inner core.
- Thick-strand chafe-resistant PVDF (Kynar®) cover.
- Two high tensile strength PVDF (Kynar®) braids.

Chlorine Transfer Hose Specifications

Part Number	Nominal Hose Size in.	Inside Diameter		Outside Diameter		Maximum Working Pressure		Minimum Burst Pressure		Bend Radius		Temperature Range	
		in.	mm	in.	mm	PSI	Mpa	PSI	Mpa	in.	mm	°F	°C
8CL	1/2	1/2	12.3	1	24.5	480	3.31	2400	16.55	2.50	61.3	-40 to 120	-40 to 49
16CL	1	1	24.5	1 5/8	39.8	436	3.01	2182	15.05	8.00	196.0	-40 to 120	-40 to 49
24CL	1 1/2	1 1/2	36.8	2 1/8	52.1	375	2.59	1875	12.93	10.00	245.0	-40 to 120	-40 to 49

Maximum allowable working pressure as per chlorine institute pamphlet 6 at 70°F. CRN available on ½" and 1".

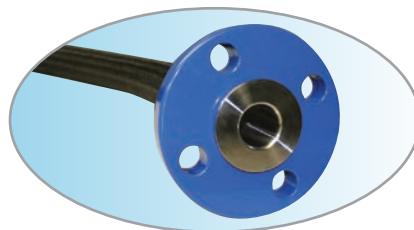
Chlorine Applications – Chlorine Transfer Hose End Fittings



Hex Male NPT – Style 03

Sizes: 1/2"-1"

Available in: Schedule 80 M



Lap Joint Flange – Style 12

Sizes: 1/2"-1-1/2"

Available in: C3, M

Alternative materials available by special order:

- PVDF (Kynar®)
- Hastelloy for wet chlorine applications

Fitting material designator:

M = Monel®

C3 = Carbon Steel Epoxy Coated 300#